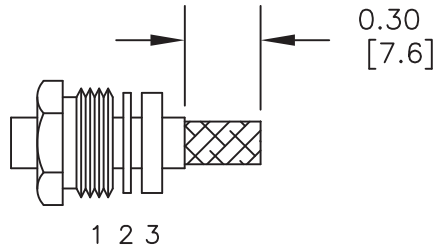


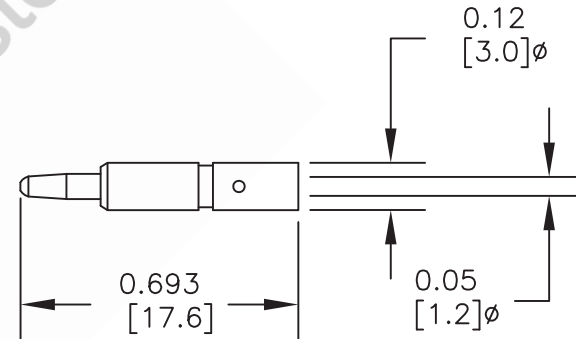
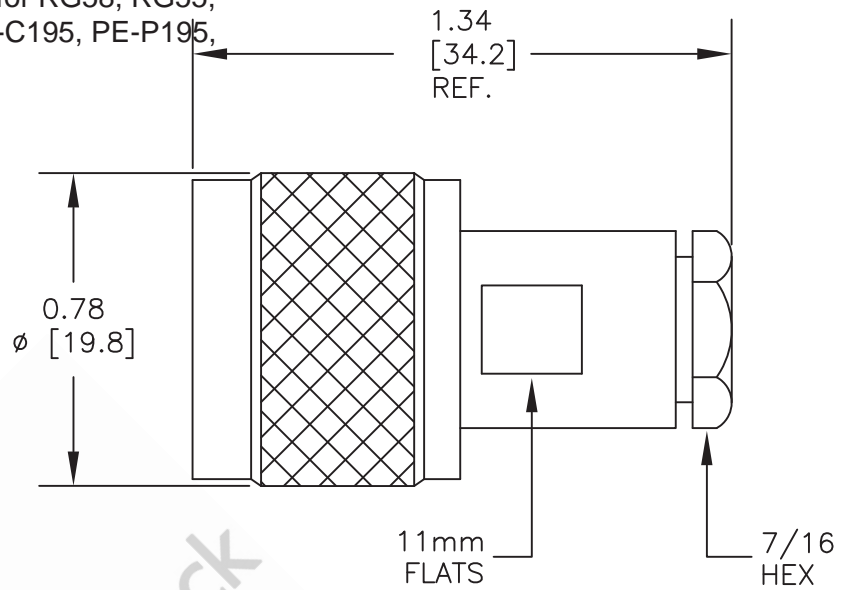
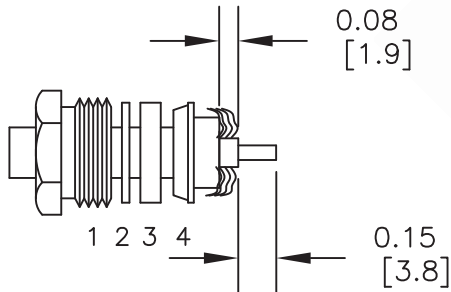
N Male Connector Clamp/Solder Attachment for RG58, RG55,  
 RG141, RG142, RG223, RG400, RG303, PE-C195, PE-P195,  
 LMR-195

ASSEMBLY PROCEDURES

1. SLIDE CLAMP NUT (1), WASHER (2) & GASKET (3)  
 OVER CABLE. STRIP CABLE AS SHOWN. DO NOT NICK  
 BRAID WHILE CUTTING JACKET. TAPER END OF BRAID  
 TO PERMIT ASSEMBLY OF BRAID CLAMP (4). SLIDE  
 BRAID CLAMP (4) OVER BRAID & SEAT AGAINST CABLE.



2. FORM BRAID OVER CLAMP NUT (4). TRIM BRAID  
 BACK TO SHOULDER. CUT DIELECTRIC TO DIMENSION  
 SHOWN. DO NOT NICK CENTER CONDUCTOR. SOLDER  
 CONTACT TO CENTER CONDUCTOR. REMOVE EXCESS  
 SOLDER. DO NOT OVER HEAT DIELECTRIC. INSERT  
 CABLE ASSEMBLY INTO BODY & TIGHTEN.



STANDARD TOLERANCES

.X	±0.2
.XX	±0.1
.XXX	±0.05

\*STANDARD TOLERANCES APPLY  
 ONLY TO DIMENSIONS IN INCHES



8TH FLOOR, BUILDING 1, YONGFU SCIENCE AND TECHNOLOGY  
 CENTER INDUSTRIAL PARK, NANZHA DISTRICT 5,  
 HUMEN, 523900, DONGGUAN, GUANGDONG, CHINA

WEBSITE: [www.ebeestock.com](http://www.ebeestock.com)  
 EMAIL: [sales@ebeestock.com](mailto:sales@ebeestock.com)

ebeestock

DWG TITLE

ET10836

NOTES:

1. UNLESS OTHERWISE SPECIFIED ALL DIMENSIONS ARE NOMINAL.
2. ALL SPECIFICATIONS ARE SUBJECT TO CHANGE WITHOUT NOTICE AT ANY TIME.
3. DIMENSIONS ARE IN INCHES [mm].

FSCM NO. 53919

CAD FILE 022216

SCALE N/A

SIZE A

2233