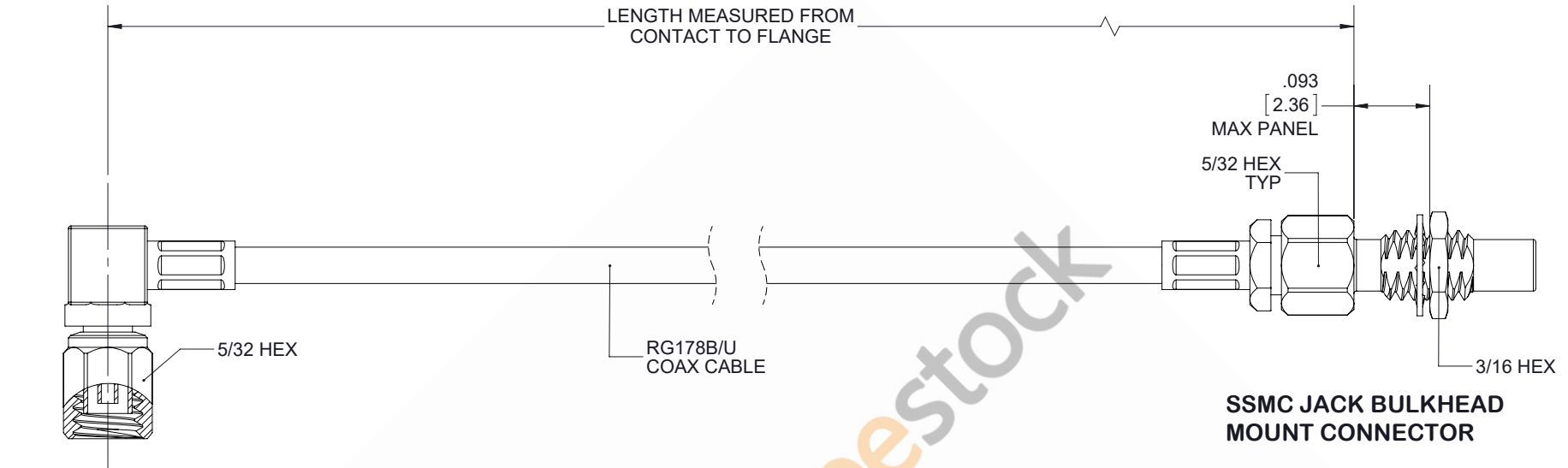
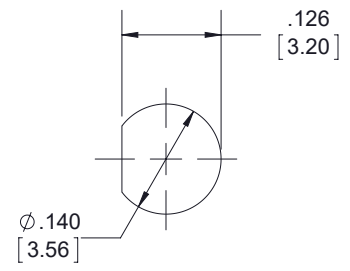


SSMC Plug Right Angle to SSMC Jack Bulkhead Cable 6 Inch Length Using RG178 Coax



SSMC R.A
PLUG CONNECTOR

SSMC JACK BULKHEAD
MOUNT CONNECTOR



MOUNTING HOLE

STANDARD TOLERANCES

.X	±0.2
.XX	±0.01
.XXX	±0.005

*STANDARD TOLERANCES APPLY ONLY TO DIMENSIONS IN INCHES



8TH FLOOR, BUILDING 1,
YONGFU SCIENCE AND TECHNOLOGY
CENTER INDUSTRIAL PARK, NANZHA DISTRICT
5, HUMEN, 523900, DONGGUAN, GUANGDONG, CHINA

WEBSITE: www.ebeestock.com
EMAIL: sales@ebeestock.com

DWG TITLE
ET32929

NOTES:
1. UNLESS OTHERWISE SPECIFIED ALL DIMENSIONS ARE NOMINAL.
2. ALL SPECIFICATIONS ARE SUBJECT TO CHANGE WITHOUT NOTICE AT ANY TIME.
3. DIMENSIONS ARE IN INCHES [mm].

CAGE CODE **53919**

CAD FILE 082217

SCALE N/A

SIZE A

9999

© 2017 Pasternack Enterprises All Rights Reserved PE3C4458-6 REV 1.0