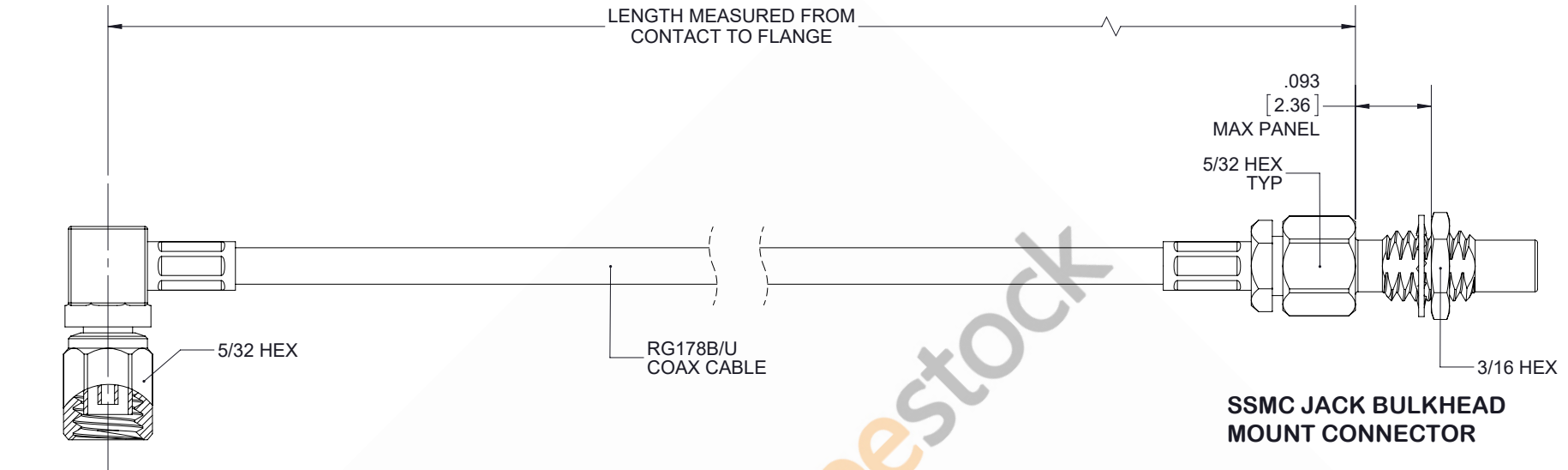
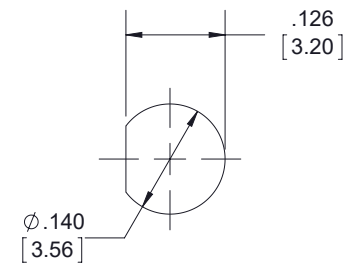


SSMC Plug Right Angle to SSMC Jack Bulkhead Cable 12 Inch Length Using RG178 Coax



SSMC R.A  
PLUG CONNECTOR

SSMC JACK BULKHEAD  
MOUNT CONNECTOR



MOUNTING HOLE

STANDARD TOLERANCES

.X	±0.2
.XX	±0.01
.XXX	±0.005

\*STANDARD TOLERANCES APPLY  
ONLY TO DIMENSIONS IN INCHES



8TH FLOOR, BUILDING 1,  
YONGFU SCIENCE AND TECHNOLOGY  
CENTER INDUSTRIAL PARK, NANZHA DISTRICT  
5, HUMEN, 523900, DONGGUAN, GUANGDONG, CHINA

WEBSITE: [www.ebeeestock.com](http://www.ebeeestock.com)  
EMAIL: [sales@ebeeestock.com](mailto:sales@ebeeestock.com)

DWG TITLE

ET32930

NOTES:

1. UNLESS OTHERWISE SPECIFIED ALL DIMENSIONS ARE NOMINAL.
2. ALL SPECIFICATIONS ARE SUBJECT TO CHANGE WITHOUT NOTICE AT ANY TIME.
3. DIMENSIONS ARE IN INCHES [mm].

CAGE CODE 53919

CAD FILE 082217

SCALE N/A

SIZE A

9999