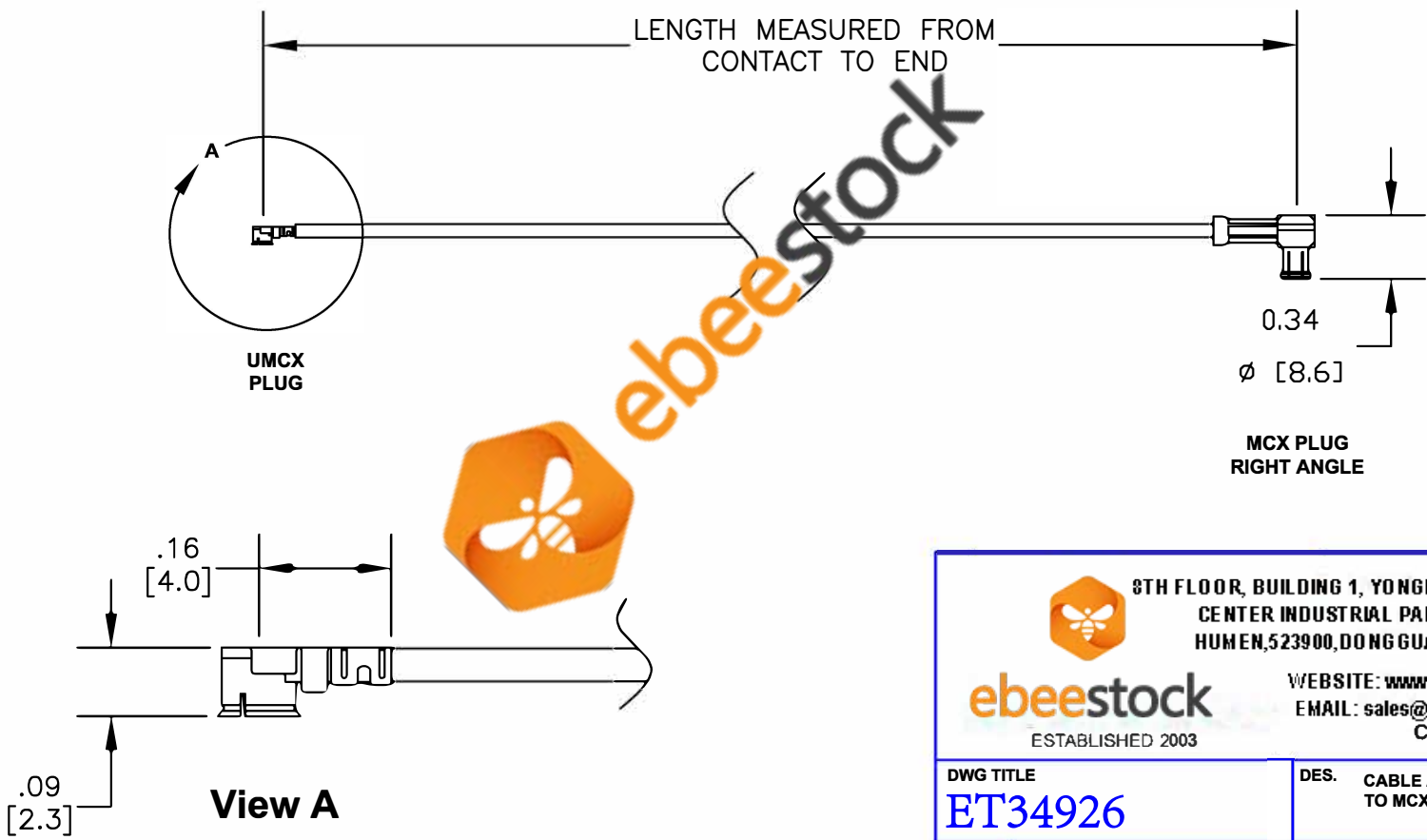



COMPONENTS	IMPEDANCE
UMCX PLUG	50 OHM
MCX PLUG RIGHT ANGLE	50 OHM
RG178B/U	50 OHM

Standard Lengths	
-6	6"
-12	12"
-18	18"
-XXX	Custom Length in inches (24" Max Length)





8TH FLOOR, BUILDING 1, YONGFU SCIENCE AND TECHNOLOGY CENTER INDUSTRIAL PARK, NANZHA DISTRICT 5, HUMEN, 523900, DONGGUAN, GUANGDONG, CHINA

WEBSITE: www.ebeestock.com
EMAIL: sales@ebeestock.com
COAXIAL & FIBER OPTICS

ESTABLISHED 2003

DWG TITLE		DES.			
ET34926		CABLE ASSEMBLY, RG178B/U, UMCX PLUG TO MCX PLUG RIGHT ANGLE			
REV. -	FSCM NO. 53919	CAD FILE	082411	SCALE	N/A
		SIZE	A		2231
NOTES:					
1. UNLESS OTHERWISE SPECIFIED ALL DIMENSIONS ARE NOMINAL.					
2. ALL SPECIFICATIONS ARE SUBJECT TO CHANGE WITHOUT NOTICE AT ANY TIME.					
3. DIMENSIONS ARE IN INCHES [mm].					
4. LENGTH TOLERANCE IS ± 1.5% OR 3/8", WHICHEVER IS GREATER.					